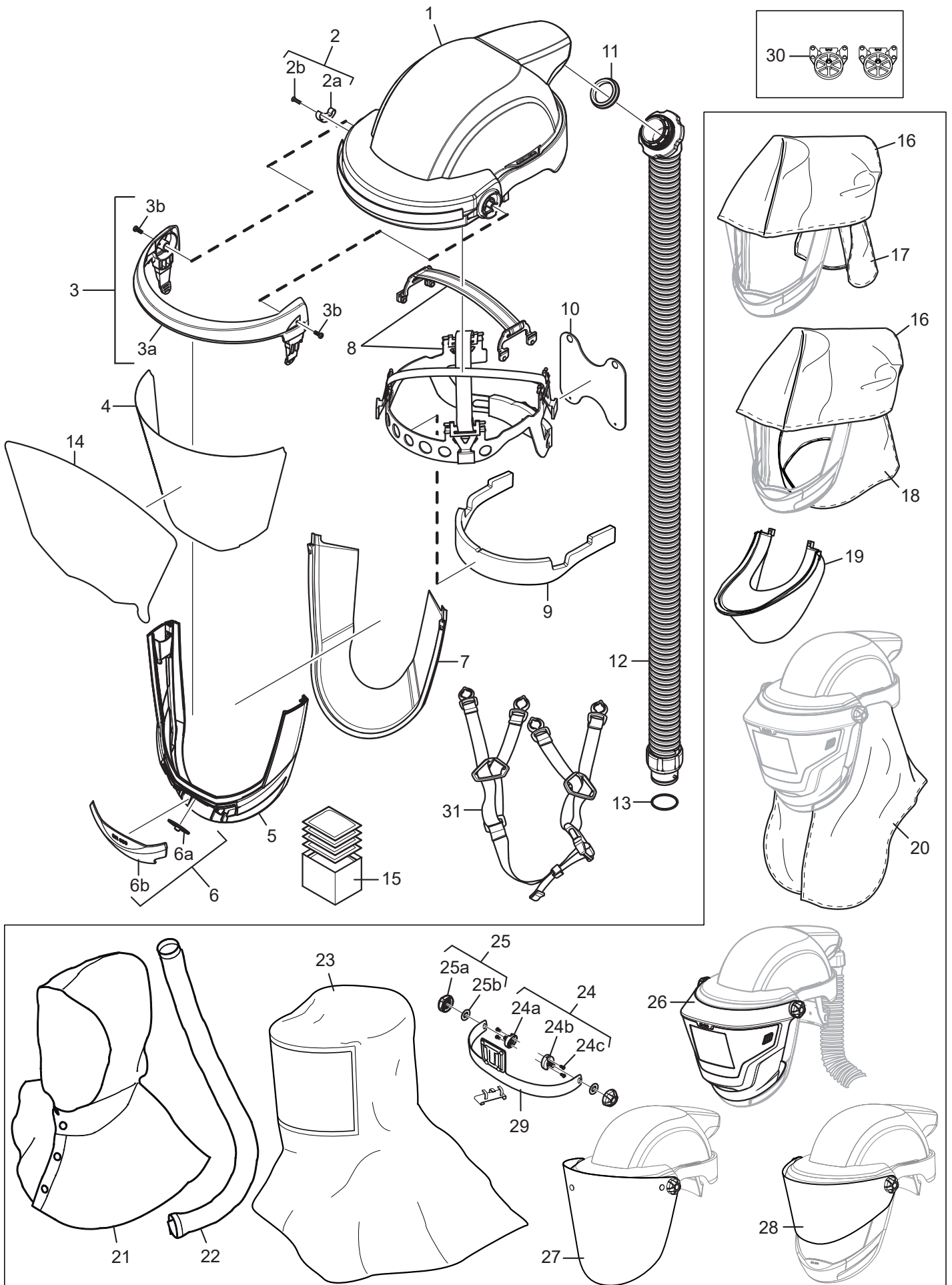


SR 580

EN

Spare parts / Accessories



| No. | Description | Ordering No. |
|------|---|----------------------|
| 1. | Helmet, incl. air duct | R06-0801 |
| 2. | Leaf spring with screw | R06-0806 |
| 2a. | Leaf spring | - |
| 2b. | Screw | - |
| 3. | Upper frame set | R06-0802 |
| 3a. | Upper frame | - |
| 3b. | Screw | - |
| 4. | Visor, PC | R06-0808 |
| 5. | Lower frame set | R06-0803 |
| 6. | Set of valves | R06-0807 |
| 6a. | Membrane | - |
| 6b. | Cover exhalation valve | - |
| 7. | Face seal | R06-0805 |
| 8. | Head harness | R06-0804 |
| 9. | Sweatband | R06-0809 |
| 10. | Neck comfort band | T06-0803 |
| 11. | Gasket | R01-1205 |
| 12. | Breathing hose | R06-0810 |
| 13. | O-ring | R06-0202 |
| 14. | Peel of set SR 582 | T06-0801 |
| 15. | Cleaning wipes. 50/box | H09-0401 |
| 16. | Heat protection, helmet | R06-0813 |
| 17. | Heat protection, neck | R06-0814 |
| 18. | Heat protection, neck and throat | R06-0815 |
| 19. | Face seal | T06-8012 |
| 20. | Neck and chest protection | T06-8011 |
| 21. | Protective hood, SR 59018 | T06-4014 |
| 22. | Protective hose for the breathing hose Hose protection, PE | T06-4016 T06-0121 |
| 23. | Tyvek Hood SR 586 | T06-0806 |
| 24. | Adapter R + L | R06-0820 |
| 24a. | Adapter R x1 | - |
| 24b. | Adapter L x1 | - |
| 24c. | Screw x4 | - |
| 25. | Knob complete | R06-0821 |
| 25a. | Knob x2 | - |
| 25b. | Washer x2 | - |
| 26. | Welding shield SR 584 <i>Note! R06-0820 and R06-0821 are required</i> | T06-8010 |
| 27. | Gold plated visor, EN 5, SR 587 Gold plated visor, EN 4, SR 587 <i>Note! R06-0820 and R06-0821 are required</i> | R06-0824 R06-0829 |
| 28. | Visor 2/3, EN 3, SR 588-1 Visor 2/3, EN 5, SR 588-2 <i>Note! R06-0820 and R06-0821 are required</i> | R06-0825 R06-0826 |
| 29. | Lamp bracket | R06-0828 |
| 30. | Bottom board for earmuffs | R06-0827 |
| 31. | Chin strap | T06-0810 |